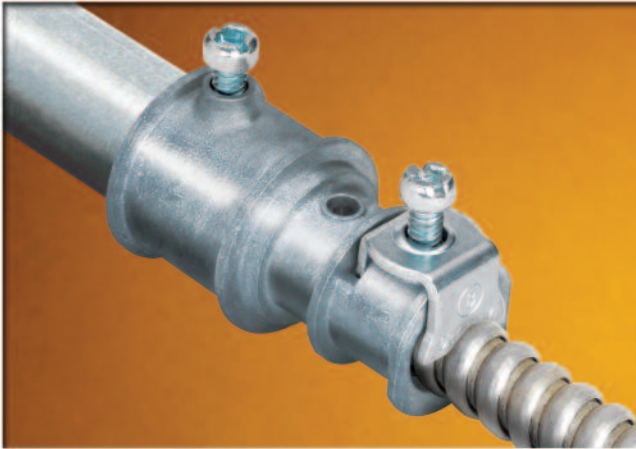
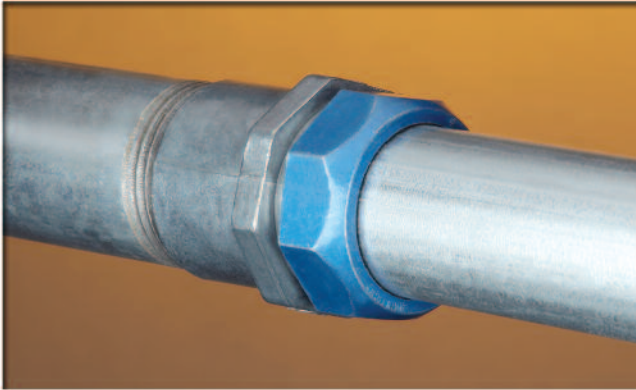


BRIDGEPORT

TRANSITION FITTINGS



CHANGING EVERYTHING.



SCAN TO SEE
**OUR FITTINGS
IN ACTION**

BRIDGEPORT TRANSITION FITTINGS

BRINGING INNOVATION TO THE JOB SITE.



4157-DC

Bridgeport's fittings are engineered to perform better than other fittings – getting the job done fast and done right. It's the inherent functional advantages and consistency of our product along with its legendary quality and service that make our fittings the right choice.

Fittings that solve problems for contractors.

Our growing line of transition fittings are designed to solve common problems that contractors run into on the job site, like coupling together dissimilar systems. In their broadest application, transition fittings convert two different types of raceway while maintaining the appropriate physical strength and electrical continuity as required by the National Electrical Code.

Bridgeport understands what contractors need to safely and quickly transition between systems with uncompromised code compliance. Our expertly designed, agency listed products allow you to do this faster and easier than ever before.

NEW FROM MIGHTY-B™

MIGHTY-MERGE® TRANSITION FITTINGS Two-to-One EMT Couplings

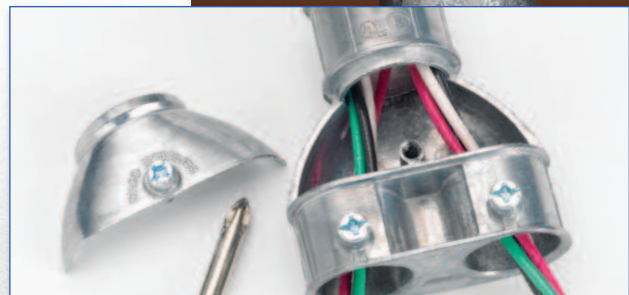


Application:

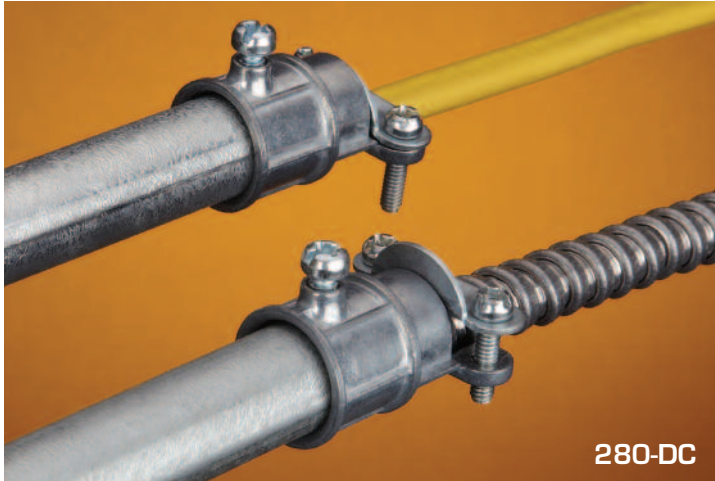
These new set screw transition couplings are used to merge two lengths of EMT conduit into one. The **4256-DC** joins two 1/2" EMT to one 3/4" EMT. Or choose the **4258-DC** to join two 3/4" EMT to a single 1" EMT. MIGHTY-MERGE Two-to-One EMT Couplings can be used in commercial and institutional construction or OEM systems.

These fittings are ideal in situations when limited knockout space is available entering an enclosure or panel, to isolate circuits, coordinate installation speed in and out of block wall construction or in an OEM design requiring tight parallel raceway management.

The single screw inspection cover provides easy access for tracing, identifying or isolating conductors.



FOR MORE INFORMATION, VISIT: WWW.BPTFITTINGS.COM



280-DC

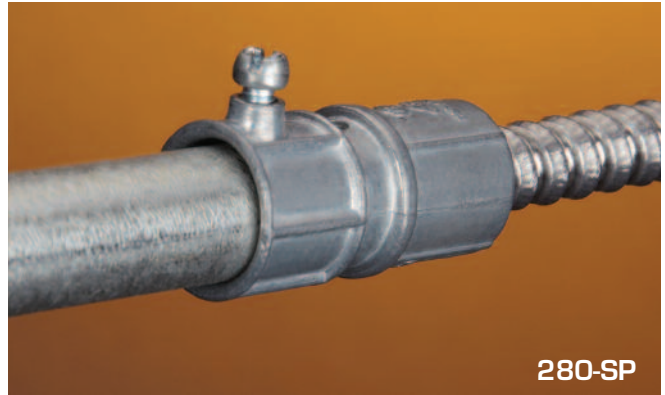


EMT to FMC Transition Couplings

Compression type for EMT; two-screw steel strap for flexible metal conduit.

Malleable Iron

Catalog Number	EMT Trade Size	Flex Trade Size	Unit Qty.	Std. Pkg. Qty.
280	1/2"	3/8"	25	100
281	1/2"	1/2"	20	100



280-SP



280-DC



281-DC, 282-DC, 282-DCX, 283-DC



280SP

EMT to AC/MC and FMC Transition Couplings

Set screw type coupling used to join EMT to flexible metal conduit. The patented 280-DC has a steel strap and is also listed for use with 14/2 to 10/3 AC/MC/MCI-A and 14/2 to 12/3 nonmetallic cables. 280SP is patented Mighty-Merge® design and has set screw end for EMT and Snap-In end for flexible metal conduit and 14/2 to 10/4 AC/MC/MCI-A cables. cULus E9391: 280-DC, 280SP, 281-DC, 282-DC, 283-DC

Zinc Die Cast

Catalog Number	EMT Trade Size	Flex Trade Size	Unit Qty.	Std. Pkg. Qty.
280-DC	1/2"	3/8"	25	100
280SP	1/2"	3/8"	25	100
281-DC	1/2"	1/2"	25	250
282-DC	3/4"	3/4"	25	100
282-DCX	3/4"	1/2"	25	100
283-DC	1"	1"	10	100

EMT to Rigid Transition Couplings

Set screw type fitting used to join EMT to rigid or IMC. Concrete-tight. Furnished with Tri-Drive slot/Phillips/Robertson head screws.

UL File No. E9391: 290-S thru 292-S

Zinc Die Cast

Catalog Number	Trade Size	Unit Qty.	Std. Pkg. Qty.
290-DC	1/2"	50	200
291-DC	3/4"	25	100
292-DC	1"	25	100

Steel

Catalog Number	Trade Size	Unit Qty.	Std. Pkg. Qty.
290-S	1/2"	25	100
291-S	3/4"	25	100
292-S	1"	10	50

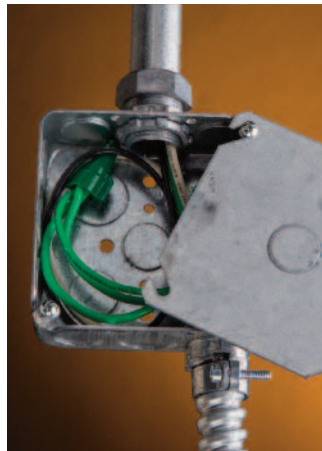


Zinc



Steel

TRADITIONAL SOLUTION



BRIDGEPORT SOLUTION



282-DC

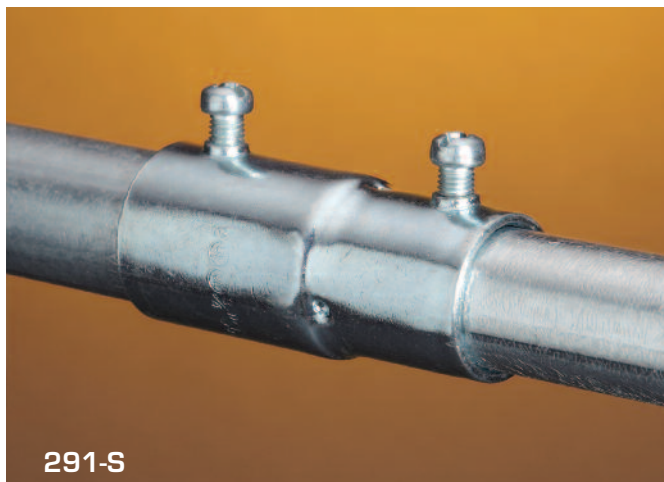
TRADITIONAL SOLUTION



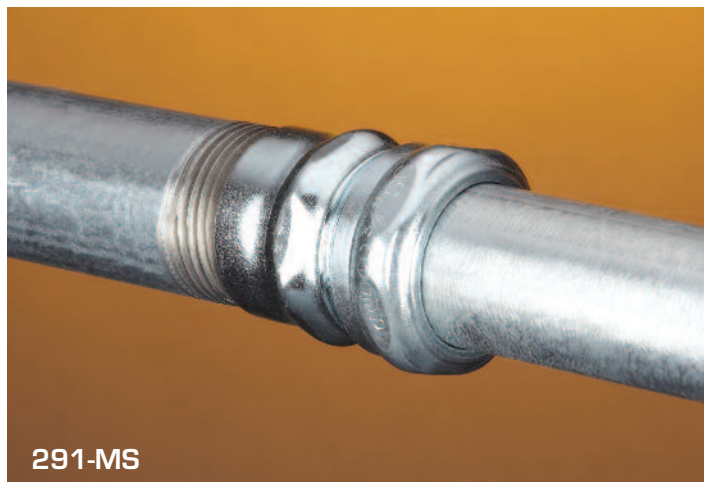
BRIDGEPORT SOLUTION



290-DC



291-S



291-MS



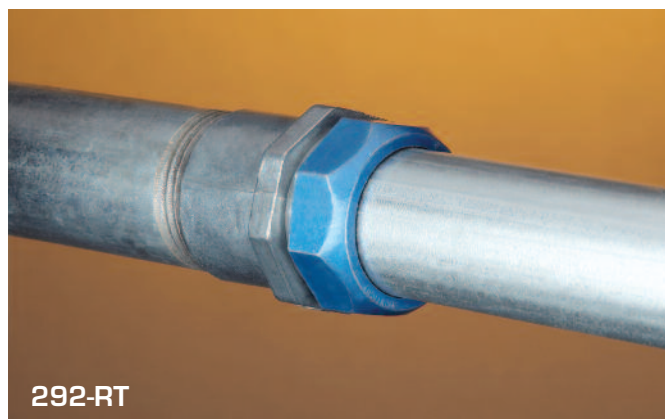
Mighty-Merge® Raintight EMT to Rigid Combination Couplings

Used to join rigid to EMT. Coupling internally threaded for rigid / IMC. Compression type for EMT. Raintight. Patented.

ETL Listed

Zinc Die Cast

Catalog Number	Trade Size	Unit Qty.	Std. Pkg. Qty.
290-RT	1/2"	25	100
291-RT	3/4"	25	100
292-RT	1"	10	50



292-RT



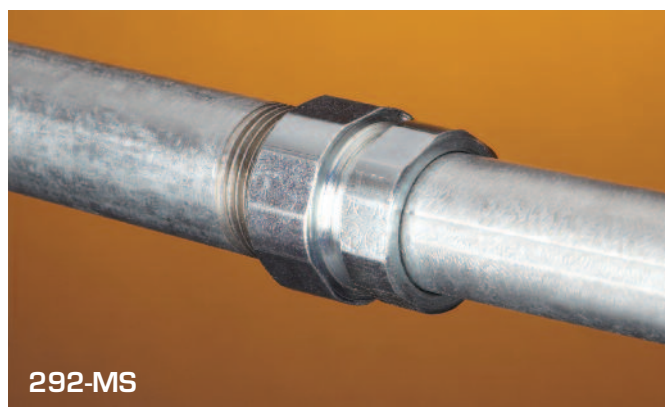
EMT to Rigid Transition Couplings

Used to join rigid or IMC to EMT. Coupling internally threaded for rigid / IMC. Compression type for EMT. Concrete-tight.

cULus File No. E9391: 292-MS

Zinc Plated Steel

Catalog Number	Trade Size	Unit Qty.	Std. Pkg. Qty.
290-MS	1/2"	25	100
291-MS	3/4"	25	100
292-MS	1"	10	50



292-MS



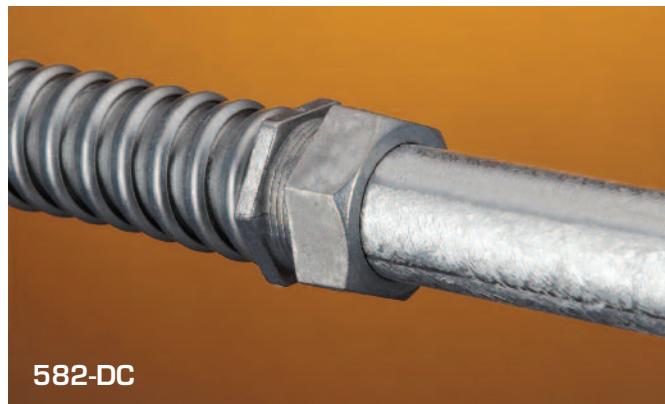
EMT to FMC Transition Couplings

Used to join EMT to flexible metal conduit. Screw-in end for flex. Compression end for EMT.

UL File No. E9391, also 581-DC UL listed for use with XRW FMC.

Zinc Die Cast

Catalog Number	Trade Size	Unit Qty.	Std. Pkg. Qty.
581-DC	1/2"	50	500
582-DC	3/4"	25	250
583-DC	1"	10	100



582-DC



Mighty-Merge® Duplex MC to EMT Transition Couplings

Used to join duplex 14/2 (.44" Ø min) to 10/3 (.61" Ø max) armored or metal clad cable or 3/8" flexible metal conduit to 3/4" EMT. Set screw type transitional fitting ideal for commercial and institutional facilities. A labor savings, compared to the traditional junction box installation. Ensure that cables are inserted such that the cable armor is visible in the inspection holes. Patented and Patents Pending.

cULus File No. E20534

Zinc Die Cast

Catalog Number	EMT Trade Size	Flex Trade Size	Unit Qty.	Std. Pkg. Qty.
4157-DC	3/4"	3/8"	25	100

TRADITIONAL SOLUTIONS



BRIDGEPORT SOLUTION



4157-DC



4256-DC



4258-DC

Mighty-Merge Two-to-One Combination Couplings

Used to join two lengths of EMT conduit into one. The 4256-DC joins two 1/2" EMT to one 3/4" EMT. The 4258-DC joins two 3/4" EMT to 1" EMT. Patented. cULus File No. E24001

Zinc Die Cast

Catalog Number	Trade Size	Unit Qty.	Std. Pkg. Qty.
4256-DC	1/2" - 3/4"	10	40
4258-DC	3/4" - 1"	10	40

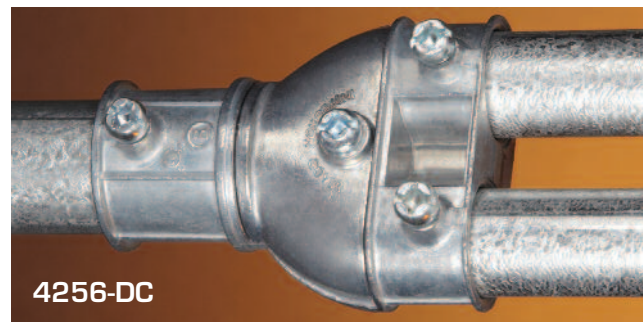
Raintight Liquid Tight to EMT Transition Couplings

Used to join either metallic or nonmetallic (Type "B") liquid tight to EMT. Concrete-tight. UL listed "Raintight". Patented.

UL File No. E24001 CSA File No. LR39354

Zinc Die Cast

Catalog Number	Trade Size	Unit Qty.	Std. Pkg. Qty.
4360-DC	1/2"	25	100
4361-DC	3/4"	10	50



4256-DC

TRADITIONAL SOLUTIONS

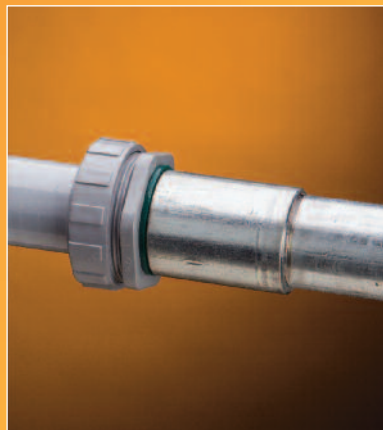


BRIDGEPORT SOLUTION



4361-DC

TRADITIONAL SOLUTION



BRIDGEPORT SOLUTION



4371-LT

Liquid Tight to Rigid Transition Couplings

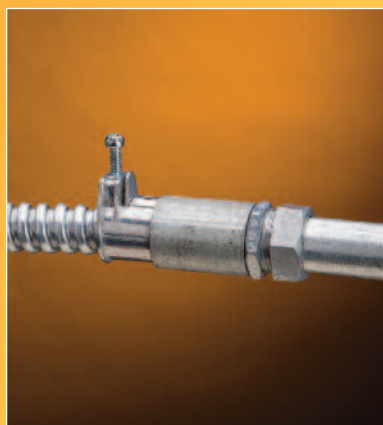
Used to join metallic to rigid / IMC. Concrete-tight. UL listed "Raintight".
cULus File No. E9391



Steel

Catalog Number	LT - Rigid Trade Size	Unit Qty.	Std. Pkg. Qty.
4369-LT	3/8" - 1/2"	25	125
4370-LT	1/2" - 1/2"	20	100
4371-LT	3/4" - 3/4"	10	50
4372-LT	1" - 1"	5	25
4373-LT	1 1/4" - 1 1/4"	4	20
4374-LT	1 1/2" - 1 1/2"	3	15
4375-LT	2" - 2"	2	10

TRADITIONAL SOLUTION



BRIDGEPORT SOLUTION



4057-DC

Mighty-Merge® Combination Couplings

Couplings used to join 3/4" EMT to flexible metal conduit and AC/MC Cable. The 4057-DC is also listed for MCIA Cable. Ensure that the cable is inserted such that the cable armor is visible in the inspection holes. Patented.

cULus File No. E20534



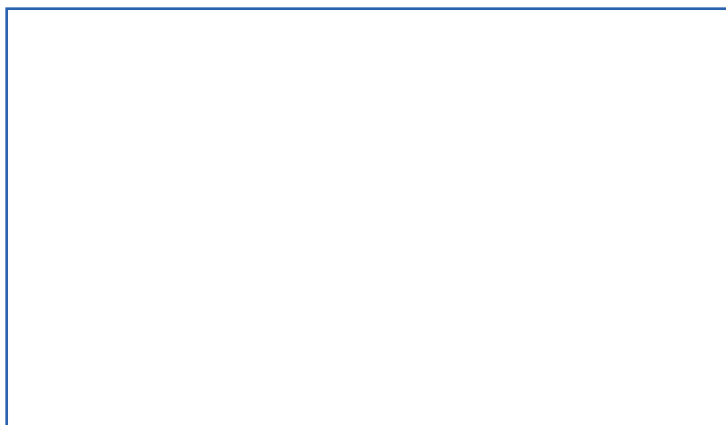
Zinc Die Cast

Catalog Number	EMT Trade Size	FMC Trade Size	MC Cable Range	Unit Qty.	Std. Pkg. Qty.
4057-DC	3/4"	3/8"	14/2-10/4 (MC) 12/3 (AC)	25	100
4058-DC	3/4"	1/2"	10/4-6/4 (MC) 10/3-6/4 (AC)	25	100

THE BRIDGEPORT FITTINGS DIFFERENCE



Distributed by:



Bridgeport Fittings, Inc.
705 Lordship Blvd.
Stratford, CT 06615-7313

Voice: 203.377.5944
Fax: 203.381.3488
E-mail: sales@bptfittings.com

www.bptfittings.com

CONNECT
ONLINE



Printed in the U.S.A.
© 2013 Bridgeport Fittings, Inc. All rights reserved.