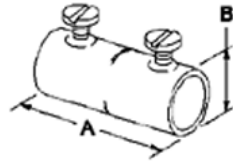
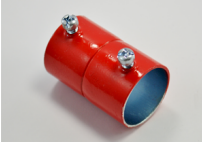


Couplings - Steel - Color-Coded (ALL COLORS)

Images



[Download Photo Image](#)

[Download Dimensional Image](#)

Application

Set screw coupling used to join two lengths of EMT. Color coded red to match EMT for easy identification. Use with red EMT for emergency circuits, fire alarm and security system applications. Concrete-tight. Furnished with Tri-Drive slot/Phillips/Robertson head screws.

Product Information

Material: Steel
Finish: Red Color

Certifications & Codes:

Federal Specification Number:	A-A-50553
NEMA Standard:	FB-1
UL Standard:	UL-514B
UNSPSC:	39131707
Patent Number:	6,861,585

Catalog ID: 242-SR

UPC Number: 78174702242

Description: 1" Fire Alarm EMT Coupling, Red Steel

Application: Set screw coupling used to join two lengths of EMT. Color coded red to match EMT for easy identification. Use with red EMT for emergency circuits, fire alarm and security system applications. Concrete-tight. Furnished with Tri-Drive slot/Phillips/Robertson head screws.

Trade Size: 1"

Std Pkg Qty: 200

Unit Qty: 20