

Test Block Bypass **MTBHMS15 Series**

100 Amp/42K AIC/480 Volt Self-Contained Meter-Main



214MTBHMS15



U214MTBHMS15

APPLICATION

- Single meter position
- Designed to receive watt-hour meters that meet ANSI C12.10
- Overhead or underground feed
- Surface mount

CONSTRUCTION

- Type 3R construction
- Combination meter/main-safety socket with factory installed 100amp breaker and test/bypass facilities¹
- Snap type sealing ring included
- 5th jaw provision at nine o'clock - U/214MTBHMS15 only
- Provisions for 2 AW base caps or hub kits on top - overhead units only
- Padlock provision
- Ring style

STANDARDS

- UL 67 listed, complies with ANSI C12.7

FINISH

- ANSI 61 gray acrylic electrocoat finish

ACCESSORIES

- Fifth jaw kit — catalog #50371
- Center and offset pole mounting brackets
- Bussed gutters, see page 75
- AW hubs
- Screw type sealing ring — catalog #25016D
- Steel or clear lexan covers for socket opening

Overhead-Surface Mount

CATALOG NUMBER	MAIN DISCONNECT	PROV.	AIC RATING	AMPACITY MAX. CONT.	VOLTAGE	SERVICE TYPE	NUMBER OF JAWS	HUB PROV.	CONDUCTOR LUG RANGE			DIMENSIONS (INCHES)			
									PHASE LINE	CONDUCTOR LOAD	NEUTRAL CONDUCTOR	FIGURE NUMBER	HEIGHT (H)	WIDTH (W)	DEPTH (D)
214MTBHMS15	(1) 100A 2P CB	NONE	42K	100 100	240/480	1Ø 3W	4	AW	14 AWG - 2/0 AWG	MAIN CIRCUIT BREAKER	14 AWG - 1/0 AWG	Fig. 1	38	12	4 5/8
215MTBHMS15	(1) 100A 3P CB	NONE	42K	100 100	480*	3Ø 3W	5	AW	14 AWG - 2/0 AWG	MAIN CIRCUIT BREAKER	14 AWG - 1/0 AWG	Fig. 1	38	12	4 5/8
217MTBHMS15	(1) 100A 3P CB	NONE	42K	100 100	480/277	3Ø 4W	7	AW	14 AWG - 2/0 AWG	MAIN CIRCUIT BREAKER	14 AWG - 1/0 AWG	Fig. 1	38	12	4 5/8

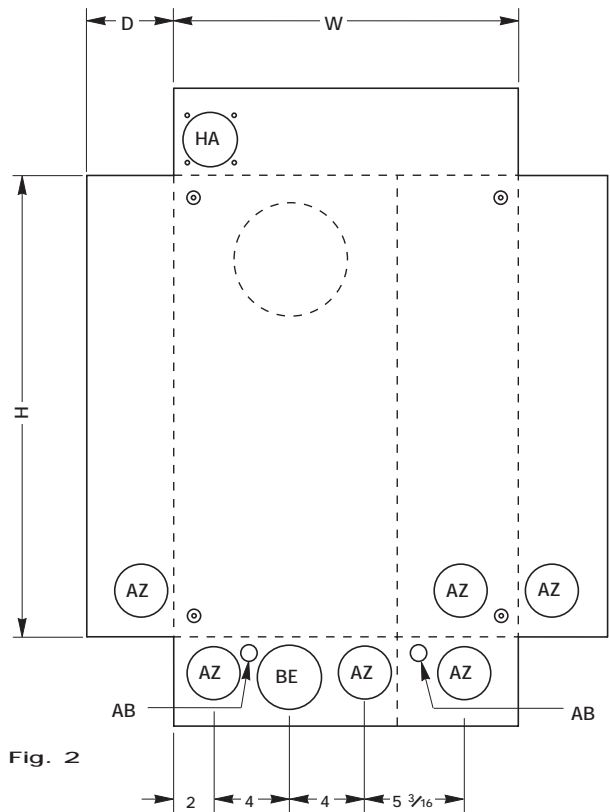
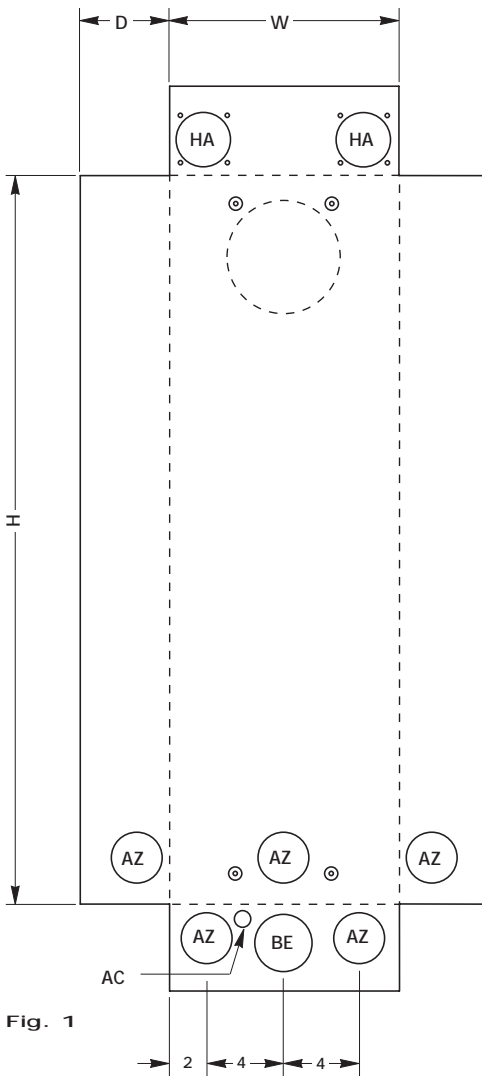
Overhead/Underground-Surface Mount

CATALOG NUMBER	MAIN DISCONNECT	PROV.	AIC RATING	AMPACITY MAX. CONT.	VOLTAGE	SERVICE TYPE	NUMBER OF JAWS	HUB PROV.	CONDUCTOR LUG RANGE			DIMENSIONS (INCHES)			
									PHASE LINE	CONDUCTOR LOAD	NEUTRAL CONDUCTOR	FIGURE NUMBER	HEIGHT (H)	WIDTH (W)	DEPTH (D)
U214MTBHMS15	(1) 100A 2P CB	NONE	42K	100 100	240/480	1Ø 3W	4	AW	14 AWG - 2/0 AWG	MAIN CIRCUIT BREAKER	14 AWG - 1/0 AWG	Fig. 2	24	18	4 5/8
U215MTBHMS15	(1) 100A 3P CB	NONE	42K	100 100	480*	3Ø 3W	5	AW	14 AWG - 2/0 AWG	MAIN CIRCUIT BREAKER	14 AWG - 1/0 AWG	Fig. 2	24	18	4 5/8
U217MTBHMS15	(1) 100A 3P CB	NONE	42K	100 100	480/277	3Ø 4W	7	AW	14 AWG - 2/0 AWG	MAIN CIRCUIT BREAKER	14 AWG - 1/0 AWG	Fig. 2	24	18	4 5/8

¹ = 60-in. lbs torque recommended for circuit-closing nut

* For 480/277V, 1Ø 3W systems, order 4-jaw unit and a 5th jaw kit

For Safety Socket Bypass instructions see page 74.



Knockouts — Conduit Sizes

- AB = 1/2"
- AC = 1/2" - 1/4"
- AZ = 2" - 1 1/2" - 1 1/4" - 1"
- BE = 2 1/2" - 2" - 1 1/2" - 1 1/4"
- HA = AW HUB