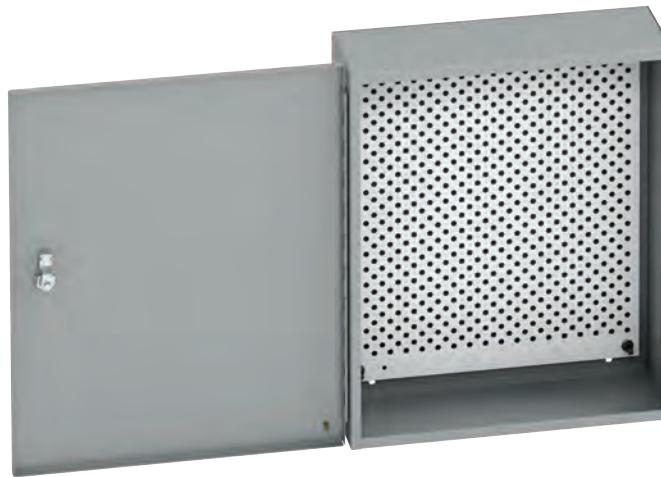


Type 1, 3, & 3R Enclosures

Panel Enclosures

Type 1 Locking Hinge Cover With Perforated Panel

Data Sheet and Catalog Number



Type 1, 3, & 3R Enclosures

Application

- Houses electrical and electronic controls and instruments in an environment which does not require oil, dust, or water tight specifications
- Protects against contact with enclosed equipment

Standards

- UL 50 listed, Type 1
- CSA C22.2 No. 40 certified, Type 1
- Conforms to NEMA standard for Type 1

Finish

- Wash and phosphate undercoat
- ANSI 61 gray acrylic electro-coat finish

Accessories

- Touch-up paint (84034)
- Self-tapping screws (10168)

Construction

- Covers and bodies are fabricated from code gauge steel (see below)
- Includes panel grounding hardware kit
- Cover has keyed quarter-turn lock, two (2) keys are included
- Includes removable 16 gauge white perforated panel
- Enclosure body has mounting holes on the back which are accessible with or without the panel installed
- Cover is secured to the body with a continuous hinge on one side and a flush latch on the opposite side
- Ground stud provided on door

Discount Schedule: C2

Subclass: D85

| Catalog Number | Height x Depth x Length A x B x C | | Gauge | | Perforated Panel Size | |
|----------------|--------------------------------------|-----------------|-------|-----|-----------------------|---------------|
| | in. | mm | in. | mm | in. | mm |
| 12126-1PP | 12.00 x 12.00 x 6.00 | 305 x 305 x 152 | 16 | 1.4 | 10.25 x 10.25 | 260.3 x 260.3 |
| 16126-1PP | 16.00 x 12.00 x 6.00 | 406 x 305 x 152 | 16 | 1.4 | 13.00 x 10.50 | 260.3 x 260.3 |
| 20166-1PP | 20.00 x 16.00 x 6.00 | 508 x 406 x 152 | 16 | 1.4 | 17.00 x 14.50 | 431.8 x 368.3 |
| 24206-1PP | 24.00 x 20.00 x 6.00 | 610 x 508 x 152 | 14 | 1.9 | 21.00 x 18.50 | 533.4 x 469.9 |
| 36246-1PP | 36.00 x 24.00 x 6.00 | 914 x 610 x 152 | 14 | 1.9 | 32.00 x 22.50 | 812.8 x 571.5 |
| 36306-1PP | 36.00 x 30.00 x 6.00 | 914 x 762 x 152 | 14 | 1.9 | 32.00 x 28.50 | 812.8 x 723.9 |

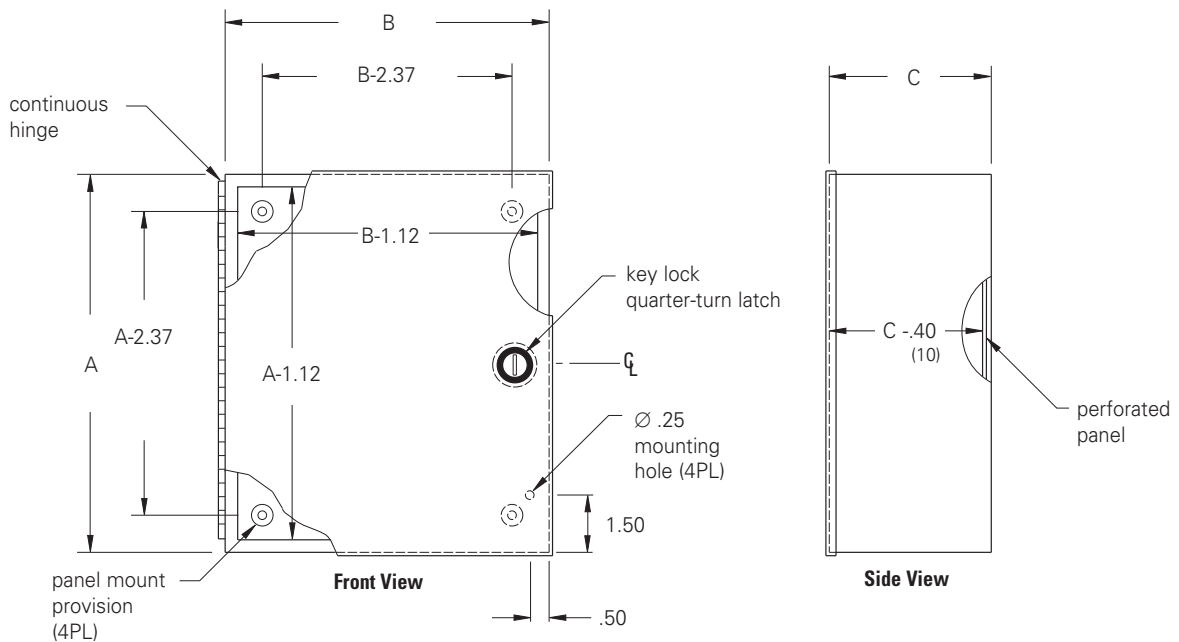
Notes: We can provide special sizes, finishes and other modifications. Consult the factory for your special requirements.
Dimensions are in inches. Millimeters shown are for reference only. Data subject to change without notice.

Panel Enclosures

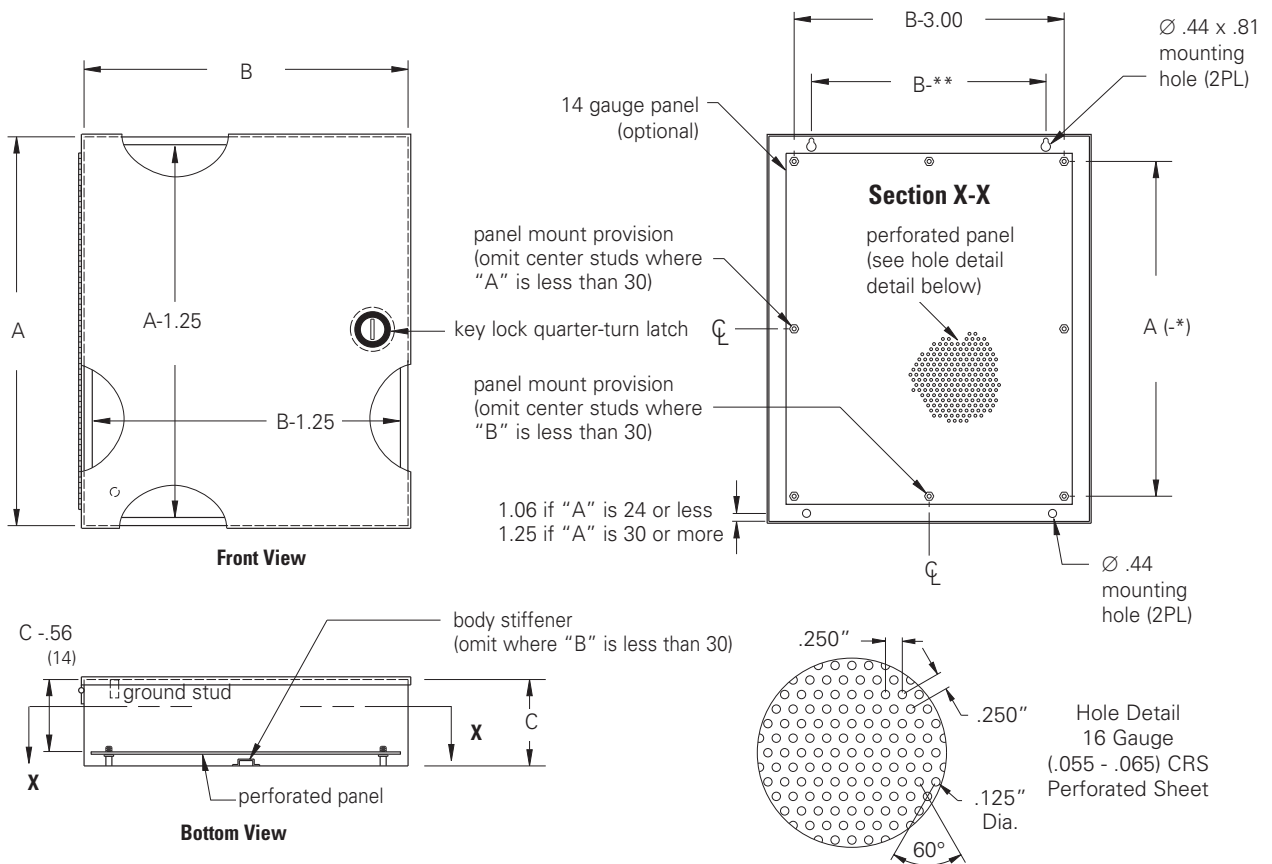
Type 1 Locking Hinge Cover With Perforated Panel

Illustration Sheet

Drawings for 12126-1PP



Drawings for 16126-1PP, 20166-1PP, 24206-1PP, 36246-1PP, 36306-1PP



Note: * = 4.50 if "A" is 24 or less * = 5.50 if "A" is 30 or more
** = 5.00 if "B" is 24 or less ** = 7.25 if "B" is 30 or more.

Notes: Dimensions are in inches. Millimeters shown are for reference only. Data subject to change without notice.