

# Areamaster™ 1000 Floodlights

Integrally Ballasted. 1000 W HPS; 1000 W, 1500 W MH

For general or hazardous locations.

**NEC:** For general, marine and hazardous locations

Class I, Division 2, Groups A, B, C, D

**CEC:** For general, marine and hazardous locations

Class I, Division 2, Groups A, B, C, D

Class I, Zone 2, Ex nR, Groups IIA, IIB, IIC

## Applications

- Powerful, efficient weatherproof floodlights for large areas such as:
  - Shopping malls
  - Industrial complexes
  - Ship loading areas
  - Mining sites
  - Parking lots
  - Sports areas
- Suitable for wet locations.

## Features

- Highly efficient, integrally ballasted floodlight. Has compact, lightweight, yet rugged diecast aluminum construction. Combines architecturally beautiful design with rugged dependability, simple installation and maintenance.
- Easy to install and service.
- A wide range of ballasts and voltages are available for both domestic and export applications.
- Integral ballast.
- One-piece housing.
- One-piece lens cover. Secured by four 1/4" Dia. captive stainless steel slotted hex-head bolts.
- Thermal shock and impact resistant glass lens.
- Heavy duty, high temperature silicone rubber gasket, firmly seated.
- Heavy duty mogul-base porcelain socket with heavy gauge brass, nickel-plated, double lamp-grip screw shell and spring-loaded center contact.
- Compound parabolic, double segment, finished aluminum reflector for optimum efficiency.
- Mounting choice:
  - (1) Yoke mount, zinc plated steel yoke with architectural bronze polyester finish.
  - (2) Pole mount, built-in slip-fitter, for internal wiring, adjustable laterally and vertically, slip fits 2" or 2-1/2" pipe, architectural bronze polyester finish.
- Cool operating temperatures for Class I, Division 2 fixtures translate into long luminaire life.

## Standard Materials

- Ballast housing and lens door: copperfree (4/10 of 1% max.) aluminum
- Gasket: silicone rubber
- Socket: heavy duty porcelain with heavy gauge brass shell
- Reflector: finished aluminum
- Yoke mount: zinc plated steel
- Bolts: stainless steel

## Standard Finishes

- Ballast housing, lens cover, yoke and pole mount: architectural bronze polyester
- Socket: nickel-plated

## Certifications and Compliances

- UL Standard: UL 1598, UL 844
- UL Listed: E10794



Yoke

Slip-Fit

Projected Area: 3.36 Sq. Ft.

# Areamaster™ 1000 Floodlights

Integrally Ballasted. 1000 W HPS; 1000 W, 1500 W MH

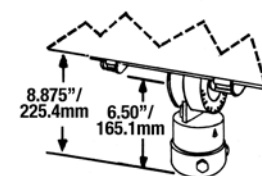
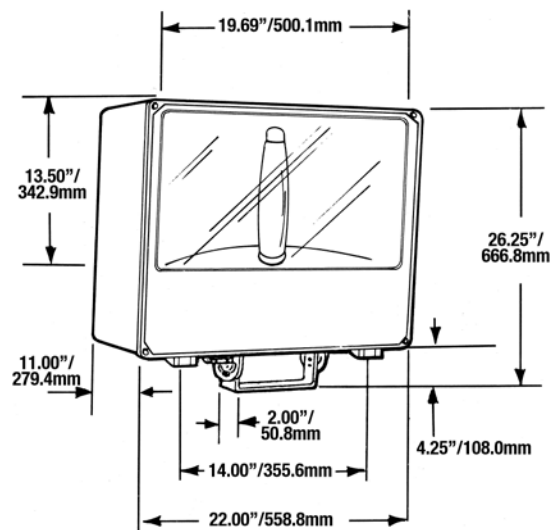
For general or hazardous locations.

NEC: For general, marine and hazardous locations  
Class I, Division 2, Groups A, B, C, D

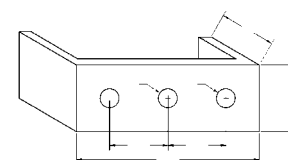
CEC <sup>1</sup>: For general, marine and hazardous locations  
Class I, Division 2, Groups A, B, C, D  
Class I, Zone 2, Ex nR, Groups IIA, IIB, IIC

Lamp Watts ❶	Line Voltage ❷	NEC/CEC	General Duty		CEC
		Class 1, Division 2 Classified Duty and Marine Yoke Mount Catalog Number ❸	NEC/CEC Yoke Mount Catalog Number ❹	NEC/CEC Slip-Fit Mount Catalog Number ❶❷	Class I, Zone 2, Ex nR Classified Duty and Marine Yoke Mount Catalog Number ❸
High Pressure Sodium					
1000	120/208/240/277	G-AM861L-MT-I/2	G-AM861L-MT	G-AM865L-MT	G-AM861L-MT-Z ❶❷
1000	120/277/347	G-AM861L-TT-I/2 ❶❷	G-AM861L-TT ❶❷	G-AM865L-TT ❶❷	G-AM861L-TT-Z ❶❷
1000	480	G-AM861L-48-I/2	G-AM861L-48	G-AM865L-48	G-AM861L-48-Z ❶❷
Metal Halide					
1000	120/208/240/277	G-AM861H-MT-I/2	G-AM861H-MT	G-AM865H-MT	G-AM861H-MT-Z ❶❷
1000	120/277/347	G-AM861H-TT-I/2 ❶❷	G-AM861H-TT ❶❷	G-AM865H-TT ❶❷	G-AM861H-TT-Z ❶❷
1000	480	G-AM861H-48-I/2	G-AM861H-48	G-AM865H-48	G-AM861H-48-Z ❶❷
1500	120/208/240/277	—	G-AM961H-MT	G-AM965H-MT	—
1500	480	—	G-AM961H-48	G-AM965H-48	—

## Dimensions



Slip-Fit Mount



Yoke Mount

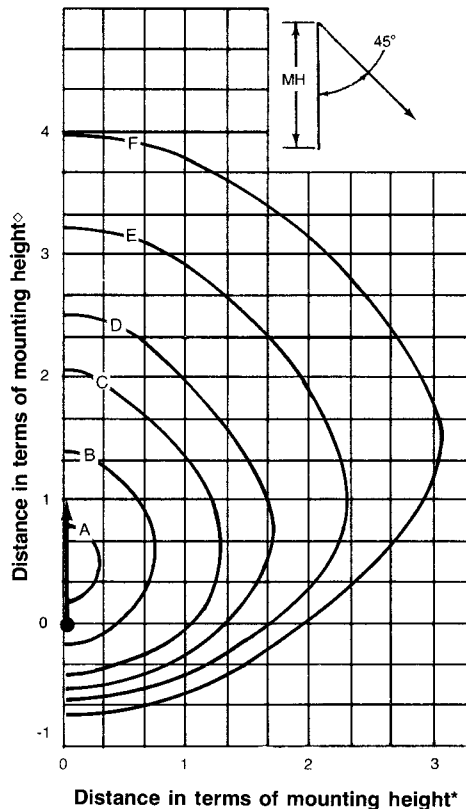
- ❶ Slip-fits 2" or 2-1/2" pipe-size tenons.
- ❷ Add suffix **-E** to catalog number if provision for bayonet type quartz emergency option is desired. Furnished with socket installed and pre-wired. Quartz emergency option NOT available for Class I, Division 2 fixtures.
- ❸ Classified duty floodlights have 3/4" N.P.T. tapped hub for power entry.
- ❹ Additional ballast types and voltages are available. Contact your local sales representative.
- <sup>1</sup> CSA Certification only.

# Areamaster™ 1000 Floodlight Photometric Data

Integrally Ballasted. 1000 W HPS; 1000 W, 1500 W MH

For general or hazardous locations.

Typical Footcandle Values †



Mtg. Ht. Ft/M	Footcandle Values for Iso Footcandle Lines					
	A	B	C	D	E	F
<b>1000W HPS Clear, 140,000 Lumens, Cat. No. G-AM861L-MT</b>						
60/18.3	8.0	3.0	1.0	0.5	0.20	0.10
50/15.2	11.5	4.6	1.5	0.72	0.27	0.15
40/12.2	17.3	6.8	2.4	1.0	0.45	0.21
30/9.1	31.5	12	4.1	1.9	0.80	0.30
<b>1000W MH Clear, 110,000 Lumens, Cat. No. G-AM861H-MT</b>						
60/18.3	6.0	3	1.0	0.5	0.20	0.10
50/15.2	8.2	4.2	1.4	0.8	0.28	0.15
40/12.2	12.6	7.9	2.3	1.2	0.42	0.19
30/9.1	23.0	11.6	4.0	2.1	0.70	0.25

Photometric Data †

	HPS	MH
Horiz. Spread	134°	133°
Vert. Spread	131°	124°
Beam Lumens	77,440	62,112
Beam Effic.	55.3%	56.5%
Max. CP	40,251	45,909
Avg. Max. CP	38,396	38,490
Total Lumens	80,846	66,008
Total Effic.	57.7%	60.0%

Electrical Specifications

Lamp Type	Line Voltage	Type of Ballast	Starting Amps	Operating Amps	Total Watts
<b>1000 Watt High Pressure Sodium</b>					
HPS	120	C.W.A.	6.35	9.50	1100
HPS	208	C.W.A.	3.80	5.50	1100
HPS	240	C.W.A.	3.20	4.80	1100
HPS	277	C.W.A.	2.75	4.20	1100
HPS	347	C.W.A.	2.20	3.30	1100
HPS	480	C.W.A.	1.80	2.45	1100
<b>1000 Watt Metal Halide</b>					
MH	120	C.W.A.	8.00	9.20	1080
MH	208	C.W.A.	4.60	5.30	1080
MH	240	C.W.A.	4.00	4.60	1080
MH	277	C.W.A.	3.50	4.00	1080
MH	347	C.W.A.	2.50	3.20	1080
MH	480	C.W.A.	2.00	2.30	1080
<b>1500 Watt Metal Halide</b>					
MH	120	C.W.A.	13.50	14.00	1610
MH	208	C.W.A.	7.70	8.00	1610
MH	240	C.W.A.	6.70	7.00	1610
MH	277	C.W.A.	5.90	6.00	1610
MH	480	C.W.A.	3.30	3.50	1610

T Numbers and Temperature Ratings of "Classified Duty" Areamaster 1000

Fixture Wattage	Fixture Type	T Ratings °C	Ambient Temp. °F/°C	T Rating Temperature Range °F/°C
1000	Class I Div 2	325	77/25	574-617 / 301-325
1000	Ex nR IIC	T3	77/25	277-392 / 136-200

† Photometric charts available on request.

◇ i.e., ratio of distance to height. Example: @20'/6.1 m mounting height, 1 means 20'/6.1 m; 2 means 40'/12.2 m, etc.

⚡ CSA Certification only.