

PX2KX Compound Barrier Type Cable Connector

Explosionproof

Wire Braid Armor and Jacketed Cables.

NEC/CEC:
 Class I, Division 1 and 2, Groups A, B, C, D
 Class II, Division 1 and 2, Groups E, F, G
 Class III
NEMA 4X
 IP66, IP67, IP68

ATEX/IECEX:
 Class I, Zone 1, Ex d IIC
 IP66, IP67, IP68

Applications

- Explosionproof Class I Division 1 brass cable connector suitable for wire braid armor or tape.

Features

- Connector provides an environmental seal on the cable outer jacket and an explosionproof compound barrier seal around the cable inner cores.
- Connector provides mechanical cable retention and electrical continuity via armor termination.
- The connector is UL Listed for NPT and metric threads.
- PX2KX forms part of a comprehensive connector range for marine shipboard and IEE45 armored cables.
- Armor termination — removable armor cone and ring. Sealing area(s) — displacement seal concept.

Standard Materials

- Connector: brass fully nickel plated
- Seal: SOLO LSF (low smoke fumes) thermoplastic elastomer
- Epoxy putty

Options

- Aluminum: replace last digit **5** with **1**
- 316L stainless steel: replace last digit **5** with **4**
- Shroud, locknut, earth tag, entry thread seal, serrated washers, adaptors and reducers: see *Cable Gland Accessories* pages.

NEC/CEC Certifications and Compliances

- UL Standard: 2225
- CSA Standard: C22.2 No. 174
- CSA Certified: 101909

ATEX/IECEX Certifications and Compliances

- Third Party Approvals: IP66, IP67 and IP68
- ATEX: SIRA13ATEX1072X, SIRA13ATEX4078X
- Marine: LLOYDS, DNV, ABS
- Ingress Protection: NEMA 4X, Oil Resistant II
- IEC Standards: 60079-0; 60079-1; 60079-7; 60079-15; 60079-31
- Shell / ERA deluge test DTS 01:1991 (after 20 years simulated accelerated ageing)

HAZARDOUS LOCATION FITTINGS: NEC/CEC, ATEX/IECEX EXPLOSIONPROOF CONNECTORS



Cable Connector Size	Metric Thread C	Standard Metric ①	Standard NPT Thread C	Catalog Numbers			Maximum Diameter Over Conductors mm (in) A	Maximum Cable Bedding Diameter mm (in) G
				Standard NPT ①	Optional NPT Thread C	Optional NPT Thread ①		
20S16	M20	2016PX2KX5	1/2	2016PX2KX0505	3/4	2016PX2KX0755	12.6 (0.5)	6.1 (0.24)
20S	M20	20SPX2KX5	1/2	20SPX2KX0505	3/4	20SPX2KX0755	12.6 (0.5)	9.5 (0.37)
20	M20	20PX2KX5	1/2	20PX2KX0505	3/4	20PX2KX0755	12.6 (0.5)	12.5 (0.49)
25S	M25	25SPX2KX5	3/4	25SPX2KX0755	1	25SPX2KX1005	17.5 (0.69)	14.0 (0.55)
25	M25	25PX2KX5	3/4	25PX2KX0755	1	25PX2KX1005	17.5 (0.69)	18.2 (0.72)
32	M32	32PX2KX5	1	32PX2KX1005	1-1/4	32PX2KX1255	23.6 (0.93)	23.7 (0.93)
40	M40	40PX2KX5	1-1/4	40PX2KX1255	1-1/2	40PX2KX1505	30.0 (1.18)	27.9 (1.10)
50S	M50	50SPX2KX5	1-1/2	50SPX2KX1505	2	50SPX2KX2005	36.6 (1.44)	35.2 (1.39)
50	M50	50PX2KX5	2	50PX2KX2005	2-1/2	50PX2KX2505	41.0 (1.61)	40.4 (1.59)
63S	M63	63SPX2KX5	2	63SPX2KX2005	2-1/2	63SPX2KX2505	47.9 (1.89)	45.6 (1.80)
63	M63	63PX2KX5	2-1/2	63PX2KX2505	3	63PX2KX3005	53.0 (2.09)	54.6 (2.15)
75S	M75	75SPX2KX5	2-1/2	75SPX2KX3005	3	75SPX2KX3005	59.9 (2.36)	59.0 (2.32)
75	M75	75PX2KX5	3	75PX2KX3005	3-1/2	75PX2KX3505	64.3 (2.53)	66.7 (2.63)
90	M90	90PX2KX5	3-1/2	90PX2KX3505	4	90PX2KX4005	75.3 (2.96)	76.2 (3.00)
100	M100	100PX2KX5	4	100PX2KX4005	5	100PX2KX5005	85.6 (3.37)	86.1 (3.39)

① Entry thread seal not supplied, see *Cable Gland Accessories and Tools*.

PX2KX Compound Barrier Type Cable Connector

Explosionproof

Wire Braid Armor and Jacketed Cables.

NEC/CEC:

Class I, Division 1 and 2, Groups A, B, C, D

Class II, Division 1 and 2, Groups E, F, G

Class III

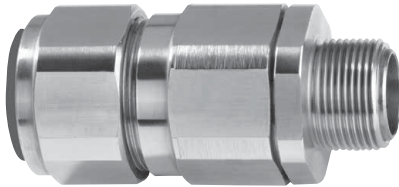
NEMA 4X

IP66, IP67, IP68

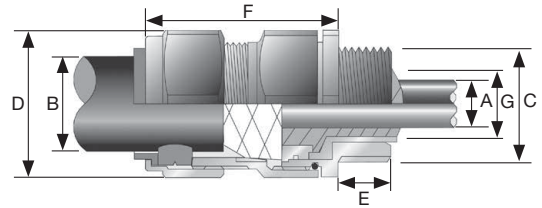
ATEX/IECEX:

Class I, Zone 1, Ex d IIC

IP66, IP67, IP68



Dimensions in Millimeters (Inches)



Cable Connector Size	Overall Cable Diameter mm (in) B		Across Flats mm (in) D	Across Corners mm (in) D	Minimum Thread Length mm (in) E	Nominal Protrusion Length mm (in) F	Maximum Number of Cores mm (in)	Optional PVC Shroud	Cable Connector Weight kg (oz)
	Min	Max							
20S16	6.1 (0.24)	11.5 (0.45)	30.5 (1.20)	33.6 (1.32)	15.0 (0.59)	58.5 (2.30)	11.0 (0.43)	PVC04	0.20 (7.05)
20S	9.5 (0.37)	15.9 (0.63)	30.5 (1.20)	33.6 (1.32)	15.0 (0.59)	58.5 (2.30)	11.0 (0.43)	PVC04	0.20 (7.05)
20	12.5 (0.49)	20.9 (0.82)	30.5 (1.20)	33.6 (1.32)	15.0 (0.59)	60.5 (2.38)	11.0 (0.43)	PVC06	0.23 (8.11)
25S	14.0 (0.55)	22.0 (0.87)	37.5 (1.48)	41.3 (1.63)	15.0 (0.59)	67.5 (2.66)	21.0 (0.83)	PVC09	0.33 (11.64)
25	18.2 (0.72)	26.2 (1.03)	37.5 (1.48)	41.3 (1.63)	15.0 (0.59)	67.5 (2.66)	21.0 (0.83)	PVC09	0.33 (11.64)
32	23.7 (0.93)	33.9 (1.33)	46.0 (1.81)	50.6 (1.99)	15.0 (0.59)	69.5 (2.74)	38.0 (1.50)	PVC11	0.51 (17.99)
40	27.9 (1.10)	40.4 (1.59)	55.0 (2.17)	60.5 (2.38)	15.0 (0.59)	78.0 (3.07)	59.0 (2.32)	PVC15	0.72 (25.40)
50S	35.2 (1.39)	46.7 (1.84)	60.0 (2.36)	66.0 (2.6)	15.0 (0.59)	75.5 (2.97)	89.0 (3.50)	PVC18	0.83 (29.28)
50	40.4 (1.59)	53.1 (2.09)	70.0 (2.76)	77.0 (3.03)	15.0 (0.59)	80.5 (3.17)	89.0 (3.50)	PVC21	0.86 (30.34)
63S	45.6 (1.80)	59.4 (2.34)	75.0 (2.95)	82.5 (3.25)	15.0 (0.59)	91.5 (3.60)	115.0 (4.53)	PVC23	1.45 (51.15)
63	54.6 (2.15)	65.9 (2.59)	80.0 (3.15)	88.0 (3.46)	15.0 (0.59)	92.0 (3.62)	115.0 (4.53)	PVC25	1.60 (56.44)
75S	59.0 (2.32)	72.1 (2.84)	89.0 (3.50)	97.9 (3.85)	15.0 (0.59)	99.0 (3.90)	140.0 (5.51)	PVC28	2.30 (81.13)
75	66.7 (2.63)	78.5 (3.09)	99.0 (3.90)	108.9 (4.29)	15.0 (0.59)	102.0 (4.02)	140.0 (5.51)	PVC30	3.05 (107.59)
90	76.2 (3.00)	90.4 (3.56)	114.0 (4.49)	125.4 (4.94)	20.0 (0.79)	120.0 (4.72)	200.0 (7.87)	PVC32	5.00 (176.37)
100	86.1 (3.39)	101.5 (4.00)	133.0 (5.24)	146.3 (5.76)	20.0 (0.79)	135.5 (5.33)	200.0 (7.87)	LSF33	6.00 (211.64)

HAZARDOUS LOCATION FITTINGS: NEC/CEC, ATEX/IECEX EXPLOSIONPROOF CONNECTORS

