

# Nickel Plated Brass Compact Fittings NPT Thread

Nickel Plated Brass NPT Thread  
Flexible Metal Conduit (LFMC) Fittings



### Construction

- Nickel plated brass fitting, has a four piece construction consisting of a gland nut, sealing ring, high tensile grounding ferrule and body.
- Included sealing washer and galvanized steel lock nut provides a means for connecting the fitting to boxes.
- Excellent corrosion resistance, strength and durability.

### Installation

- Fitting is ideal for use with standard liquid-tight conduit to allow easy installation. IP 66/67 Rated when installed with approved conduit.
- Approved for both exposed and concealed locations. Rated for temperature ranges -49°F to + 221°F (-45°C to +105°C).
- Suitable for harsh industrial, food and beverage, petrochemical, waste water, salt water and other corrosive applications.
- Suitable for use in hazardous locations per NEC Articles 501 Class I Div. 2, Article 502 Class II Div. 1 & 2, Article 503 Class III Div. 1 & 2.
- Compact design is ideal for tight spaces.
- Complies with UL Standard 514B File No. E234207.



Straight and 90° - NPT Thread 3/8" through 2"



45° - NPT Thread 3/8" through 1"

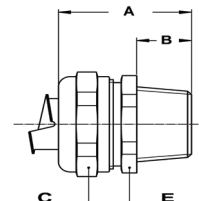
### NEC Articles

- Article 501.10 (B) (2) Class I Div. 2
- Article 502.10 (A) (2) and (B) (2) Class II Div. 1 & 2
- Article 503.10 (A) (3) and (B) Class III Div. 1 & 2



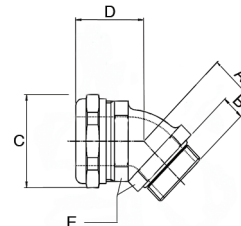
## NPT Straight Compact Fittings

Size NPT	Sealtite Size (inch)	Min. Internal Bore (mm)	Dimensions in inches					Standard Package	PIN Number	Weight (lbs/100)
			A	B	C	D	E			
1/2"	3/8"	10.4	1.259	0.472	1.023	-	0.944	10	7140122	10.1
1/2"	1/2"	13.8	1.388	0.472	1.141	-	1.063	10	7140162	11.9
3/4"	3/4"	18.5	1.378	0.472	1.378	-	1.299	5	7140202	17.2
1"	1"	23.8	1.456	0.511	1.771	-	1.732	5	7140262	31.3
1-1/4"	1-1/4"	31.9	1.653	0.590	2.086	-	2.047	2	7140352	43.2
1-1/2"	1-1/2"	36.9	1.889	0.630	2.440	-	2.362	2	7140402	65.5
2"	2"	47.9	2.126	0.748	2.992	-	2.834	2	7140502	105.4



## NPT 45° Compact Fittings

Size NPT	Sealtite Size (inch)	Min. Internal Bore (mm)	Dimensions in inches					Standard Package	PIN Number	Weight (lbs/100)
			A	B	C	D	E			
1/2"	3/8"	11	0.945	0.551	1.114	1.102	0.945	10	7144122	15.9
1/2"	1/2"	14.5	0.984	0.551	1.244	1.181	1.063	10	7144162	18
3/4"	3/4"	19.4	1.063	0.551	1.504	1.299	1.299	5	7144202	38.6
1"	1"	24.7	1.260	.630	1.949	1.496	1.653	5	7144262	64.8



## NPT 90° Compact Fittings

Size NPT	Sealtite Size (inch)	Min. Internal Bore (mm)	Dimensions in inches					Standard Package	PIN Number	Weight (lbs/100)
			A	B	C	D	E			
1/2"	3/8"	10.4	1.063	0.472	1.023	1.260	0.944	10	7149122	15.9
1/2"	1/2"	13.8	1.181	0.472	1.141	1.338	1.063	10	7149162	18
3/4"	3/4"	18.5	1.338	0.472	1.378	1.574	1.299	5	7149202	38.6
1"	1"	23.8	1.614	0.511	1.771	1.929	1.653	5	7149262	64.8
1-1/4"	1-1/4"	31.9	1.811	0.511	2.086	1.968	2.047	2	7149352	93.5
1-1/2"	1-1/2"	36.9	2.204	0.551	2.441	2.244	2.362	2	7149402	128.3
2"	2"	47.9	2.441	0.630	2.992	2.677	2.834	2	7149502	212.1

